

Liquivision X1 Hardware User Manual

Version 9.0 June 2012 (updated for version 5 hardware)

► TABLE OF CONTENTS

| | |
|--|----|
| IMPORTANT NOTICES | 2 |
| PARTS LIST | 4 |
| X1 HARDWARE SPECS..... | 5 |
| ANATOMY OF THE X1 | 5 |
| X1 ACCESSORIES | 9 |
| CHARGING THE X1..... | 10 |
| X1 USB COMMUNICATION WITH YOUR PC..... | 13 |
| X1 TROUBLESHOOTING GUIDE | 15 |
| APPENDIX..... | 16 |

► IMPORTANT NOTICES

User Agreement and Warranty

Use of your Liquivision X1 is subject to the User Agreement and Warranty (“Agreement”) included in the X1 package, and available at the Liquivision website: www.liquivision.ca.

You must read the entire Agreement before using your X1. If you do not agree with any term of the Agreement, you must not use the X1, and you may return the X1 to Liquivision or the authorized Liquivision dealer from which you purchased the X1 for a full refund within 30 days after your date of purchase.

If you use the X1, you are deemed to have agreed to the User Agreement and Warranty.

User Manual

The User Manual is delivered to you on the CD included in the X1 package, and is available at the Liquivision website: www.liquivision.ca.

You must read this entire X1 User Manual before using your X1. Incorrect use of the X1 or its accessories will invalidate your Warranty and can cause permanent damage to the X1 or its accessories.

Important Rules

Here are some important rules you must follow while using the X1. Not abiding by these rules will void your Warranty. Please consult the Agreement for details (section 4.3 “Warranty Limitations and Exclusions”).

- The X1 may only be submerged when worn by a human being. Any un-manned submersions including, but not limited to, submersions in an un-manned vehicle or on a rope, will void the Warranty.
- The X1 may only be submerged to a maximum depth of 180m (590 ft). Any submersions or pressurizations beyond this depth will void the Warranty.
- Only the X1 wrist unit and strap have been designed for underwater use. Never dive with any of the attachments, accessories, or cables connected to the X1. Doing so will damage the accessories and/or the X1, and will void the Warranty.
- Do not recharge the X1 in direct sunlight, or allow the temperature of the X1 to exceed 45°C (113°F) during recharging.
- Do not expose the X1 to chemical products including, but not limited to, mosquito repellents.
- Do not attempt to open, modify or repair your X1 yourself. Contact your dealer for assistance.

Important Notice on Charging

When you want to charge your X1, **FIRST** you must connect the X1 to the Multifunction Attachment, **THEN** you can connect the attachment to the AC Adapter and into a power supply.

When you want to stop charging your X1, **FIRST** disconnect the unit from power, **THEN** disconnect the Multifunction attachment from the X1.

If you do not follow these rules, your X1 may not function properly and you may need to reset it.

CE Certification

The Liquivision X1 hardware has received CE certification (EN 13319).

Accuracy Check

The X1 is designed to provide +/-1% accuracy in its readings. While we feel confident of the ongoing accuracy of the X1, European (CE) regulations require the unit to be periodically checked for the accuracy of its depth and time readings. The CE required accuracy level is +/- 3.5%. You may contact your dealer regarding testing every 5 years.

Liquivision Limitation of Liability

The Agreement includes exclusions and limitations of Liquivision's liability to you. These exclusions and limitations include, but are not limited to, the following:

YOU AGREE THAT YOU UNDERSTAND AND ACCEPT ALL RISKS ASSOCIATED WITH DIVING, AND THAT LIQUIVISION IS NOT LIABLE TO YOU OR ANY OTHER PERSON, INCLUDING YOUR HEIRS, EXECUTORS OR PERSONAL REPRESENTATIVES, FOR ANY LOSS, DAMAGE, COST, EXPENSE OR CLAIM ARISING OUT OF, CAUSED BY OR RELATING TO YOUR PERSONAL INJURY OR DEATH WHILE DIVING, EVEN IF YOUR PERSONAL INJURY OR DEATH IS CAUSED, IN WHOLE OR IN PART AND DIRECTLY OR INDIRECTLY, BY THE X1, ANY 3RD PARTY SOFTWARE (AS DEFINED BELOW) OR THE DRIVER SOFTWARE PROVIDED WITH THE X1 (THE "DRIVER") OR YOUR USE OF THE X1, ANY 3RD PARTY SOFTWARE OR THE DRIVER, AND REGARDLESS OF WHETHER OR NOT THE X1, ANY 3RD PARTY SOFTWARE OR THE DRIVER FUNCTIONED PROPERLY OR WAS DEFECTIVE IN ANY WAY.

YOU HEREBY IRREVOCABLY WAIVE AND RELEASE LIQUIVISION FROM ANY LIABILITY OR OBLIGATION TO YOU OR YOUR HEIRS, EXECUTORS OR PERSONAL REPRESENTATIVES FOR ANY LOSS, DAMAGE, COST, EXPENSE OR CLAIM ARISING OUT OF, CAUSED BY OR RELATING TO YOUR PERSONAL INJURY OR DEATH WHILE DIVING, EVEN IF YOUR PERSONAL INJURY OR DEATH IS CAUSED, IN WHOLE OR IN PART AND DIRECTLY OR INDIRECTLY, BY THE X1, ANY 3RD PARTY SOFTWARE OR THE DRIVER OR YOUR USE OF THE X1, ANY 3RD PARTY SOFTWARE OR THE DRIVER, AND REGARDLESS OF WHETHER OR NOT THE X1, ANY 3RD PARTY SOFTWARE OR THE DRIVER FUNCTIONED PROPERLY OR WAS DEFECTIVE IN ANY WAY.

You must read the Agreement for all limitations and exclusions of Liquivision's liability to you.

3rd Party Software

The X1 as purchased by you is computer hardware only, and it will not operate or perform any function until you obtain and install third party decompression software ("3rd Party Software").

Here is a list of X1-compatible 3rd Party Software available at time of printing:

V-Planner Live [VPM-B/E]: www.hhssoftware.com/v-planner-live/

MultiDeco-X1 [VPM-B/E and Buhlmann-GF]: www.hhssoftware.com/multideco-x1/

You can find a current list of 3rd Party Software on the Liquivision website:

http://liquivision.com/x1_software.php

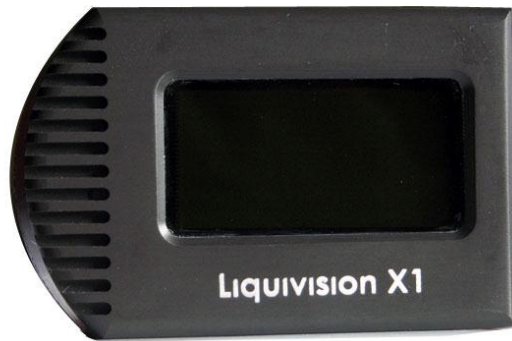
Liquivision does not recommend or endorse any 3rd Party Software, and you are responsible to select, purchase, install and properly use the 3rd Party Software of your choosing. Liquivision is not responsible for any problems you may experience as a result of use of the 3rd Party Software or the Driver, including death, personal injury or loss or damage to your computer, software, data or other personal property.

Liquivision makes no representation, warranty, condition or guarantee regarding the current or future availability or quality of 3rd Party Software, including the availability of software updates or upgrades. Any claims regarding 3rd Party Software should be directed to the manufacturers of the 3rd Party Software.

Contact your preferred software company for software user manual, download and installation instructions, and technical support.

► PARTS LIST

In your X1 package, you will find the following items:



1. X1 Computer
2. Heavy duty wrist strap
3. Multifunction Attachment
4. USB Cable
5. AC Adapter
6. International Plug Adapters



Clockwise from top left:

- AC Adapter
- Strap
- Plug Adapters
- Multifunction Attachment
- USB Cable



▶ X1 HARDWARE SPECS

Depth rating: 180m / 590ft
Casing: Hard anodized aluminum
Display glass: Borosilicate
Battery: Lithium polymer rechargeable (factory changeable)
Temperature measurement range: -10 to 50C
Flash memory: 2048KB

▶ ANATOMY OF THE X1

Internal Components

Gel Filling

The electronics in the X1 are potted with a gel that allows for the elimination of O-rings. You may see gel around certain parts of the unit. Exposed gel does not compromise the function of the X1.

Pressure Sensor

Versions 1 through 4 of the X1 hardware contain a silicon-filled pressure sensor. Version 5 of the X1 hardware contains two ceramic pressure sensors. The X1 is warranted to a depth of 180m.

Lithium Polymer Battery

The X1 features a rechargeable battery that has a spec lifespan of over ten years. Depending on software energy consumption by 3rd party software, the X1 can operate for over 30 hours of continual use in dive mode and last several months in sleep mode. The battery life of the rechargeable battery may decline gradually with use, but the X1 is designed to maintain functional battery power for over 10 years. If needed, the rechargeable battery can be changed by the Liquivision factory.

3-axis accelerometer, Magnetic Field Sensor and Water Sensor

These sensors allow for a variety of advanced software features. See your 3rd party software manual for more information.

Software

Various 3rd Party decompression software packages can be loaded into the X1. Currently there are two packages available, but more are being developed. Only one software package can be loaded into the X1 at a time. You can switch between software packages yourself with a Windows PC with a USB port. Some of these 3rd Party packages offer Bottom Timer mode, for users who do not wish to use decompression software

Where are the buttons?

You control the function of the X1 at all times by tapping the side of the casing with your fingers. Where and how many times you tap the casing is determined by the 3rd party software you have chosen to install on the X1. This revolutionary technology eliminates the difficulty of pressing small buttons with thick gloves and the risk of button malfunction at depth. Navigation through settings & menus is intuitive. You can access menus during dive mode by tapping the casing as specified by your 3rd party software user manual.

OLED Display and Mineral Glass

The X1 features an Organic LED graphic display, which allows for a wide variety of font sizes and graphics. The resolution of the display is 128 x 64 and features a 180 degree viewing angle. The display is bright yellow on a black background. The OLED display is rated to retain more than half its initial brightness after 40,000 hours of use.

Liquivision recommends using the X1 display on the **lowest required brightness setting** to reduce the natural results of display aging and use, such as display burn-in or decreased brightness over time. Changes to the X1 display as a result of aging or use (including display burn-in or decreased brightness over time) are a natural result of the use and aging of the X1 display and are not defects and are not covered by the Warranty.

The display is protected against scratching, pressure and impact damage by borosilicate mineral glass.

Anodized Aluminum Casing



NOTE: Dimensions may vary slightly based on hardware version.

The X1 casing is built from hard anodized aluminum and is 67mm long x 44mm wide x 24mm thick in Hardware Version 5 (other versions may vary slightly). Both the display and the casing are extremely scratch resistant. While most knives and sharp tools won't scratch the X1, certain barnacles, certain types of sharp rocks and other marine invertebrates can cause minor scratches if the X1 is forcefully struck or scraped against them.



Steel Contact Pins

The X1 features seven contact pins that perform a variety of roles:

- Detecting the presence of water
- Connecting to the multifunction attachment for charging, software upgrades, resetting or downloading dive data to your PC.

The water sensing pins are on the back of the unit for hardware versions 1 to 4, and on the side for hardware version 5.

The contact pins must be clean and dry before connecting the multifunction attachment.

Screw Holes for Multifunction Attachment

The screw holes are for the purpose of attaching the Multifunction Attachment, as well as other hardware expansion modules like the PO2 interface and wireless air integration module.

Infrared transmitter/receiver window

The infrared window is reinforced mineral glass that provides a medium for the transmission and reception of digital infrared signals. The infrared window allows for a wide range of expansion hardware interaction such as communication with a PDA, PC, or CCR sensor link.

Serial Number

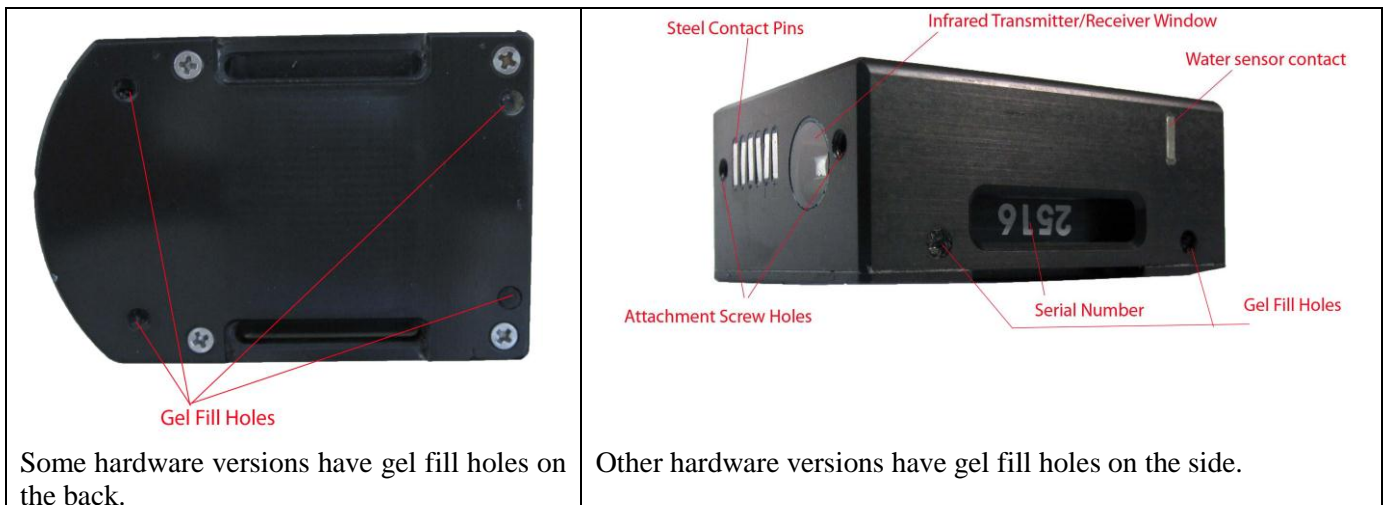
The X1 unit serial number is located on the upper edge of the unit, and should also be written on the retail box. The serial number is required for your warranty, 3rd party software downloads and to track compatibility with future software upgrades. We recommend that you write down your serial number and keep it in a secure place in case of theft. Liquivision and the 3rd party software companies all maintain data to prevent any software updates for stolen units.

Backplate

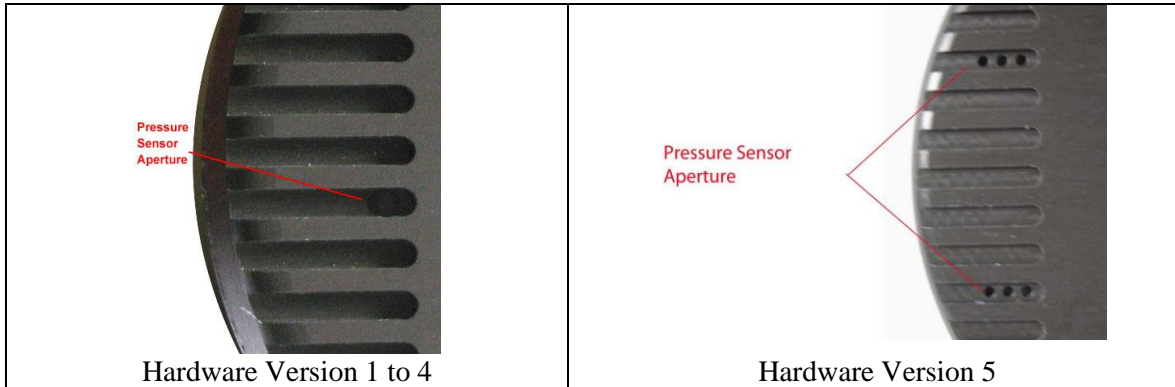
The X1 back plate protects the X1 internal circuitry from damage from high impacts. The back plate can only be removed by qualified staff at Liquivision.



Gel Fill Holes



Pressure Sensor Aperture



The pressure sensor aperture(s) allows the pressure sensor(s) to come in direct contact with the surrounding water and measure the hydrostatic pressure.

These holes must not be blocked or covered in any way.

Strap

The X1 strap can easily be attached to the unit by slipping the straps through each of the open slots on the X1 back plate. The open slots also may allow custom strap insertion.

Secure the strap by taking advantage of the safe-locking mechanism as shown.



Original Strap



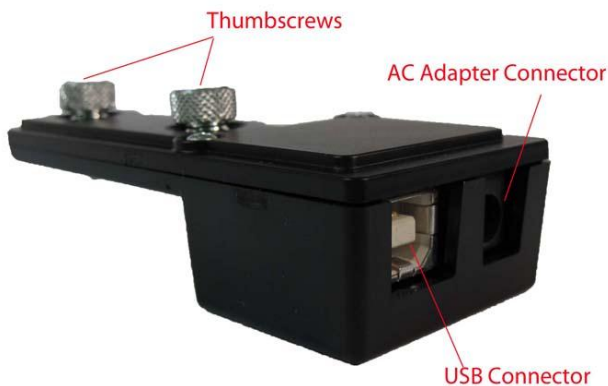
New Depth Compensating Strap

A 3rd party company called Deep Sea Supply (<http://www.deepseasupply.com>) makes a special bungee mount for the X1. This allows better compensation for wetsuit or drysuit compression at depth. The bungee mount must be purchased separately either directly from Deep Sea Supply, or from your dealer. **The bungee mount is not CE certified.** The bungee mount is shown below:



► X1 ACCESSORIES

Multifunction Attachment



The Multifunction Attachment (called the “Attachment” below for simplicity’s sake) allows for a variety of functions, including:

- Charging of the X1 battery via the AC Adapter
- Connection of the X1 via USB cable to a PC, to upload software to the X1
- Download of the X1 dive data to a PC
- Resetting of the X1 with the reset button



AC Adapter

The AC Adapter allows you to connect the X1 to a wall outlet. The AC adapter autoswitches between different international voltages (90-260V AC).

Plug Adapters

Four plug adapters are included with the X1 that allow compatibility of the AC Adapter with wall sockets in most countries.

USB Cable

The USB cable allows you to connect your PC to the X1 via the Multifunction Attachment.

► CHARGING THE X1

We recommend charging your X1 fully once you have received it. Your X1 may already have a partial charge or be completely discharged.

*****WARNING:** It is very important that you follow these steps for charging your X1. If you connect or disconnect your X1 in a different sequence, your X1 could malfunction and require a hardware reset. *******

Connecting the Attachment and AC Adapter for charging

1. Make sure the AC Adapter is NOT connected to the Attachment:



2. Connect the Attachment to the X1 by using thumb screws:



3. Screw each thumb screw a little at a time evenly to maintain proper alignment.
4. Once the Attachment and X1 are connected, you can connect the AC Adapter to the Attachment and the wall power source. Use the correct plug adapter if needed.



5. Your X1 should automatically start charging once the Attachment and AC Adapter are connected.
6. The display will show a “charging status” – how it appears will depend on the 3rd party software you have installed on the X1.
7. Charging should take approximately 4 hours.

Disconnecting AC Adapter after charging

8. When you disconnect your X1, FIRST remove the power supply from the Attachment, THEN remove the Attachment from the X1.



Battery Life

Battery life for the X1 will vary depending on 3rd party software. Battery power conservation can be achieved in a variety of ways, including OLED display brightness, sampling rate and variable demands on X1 hardware. Consult your 3rd party software user manual for more information.

In general, the X1 lasts for 20-30 hours in dive mode and anywhere from several days to several weeks in sleep mode on a single charge.

► X1 USB COMMUNICATION WITH YOUR PC

*****WARNING:** You must **FIRST** install the USB Drivers on your computer, before you connect the X1 to the computer using the USB cable***

Overview

To connect your X1 with your computer, you must first install the USB X1 Driver which you can download here: http://liquivision.com/x1_manuals.php . Once this process has been successfully completed, you can easily connect your PC to the X1 through the Multifunction Attachment and download your preferred software.

For instructions on how to download and/or install 3rd Party Software, please refer to the software user manual of each respective 3rd party company.

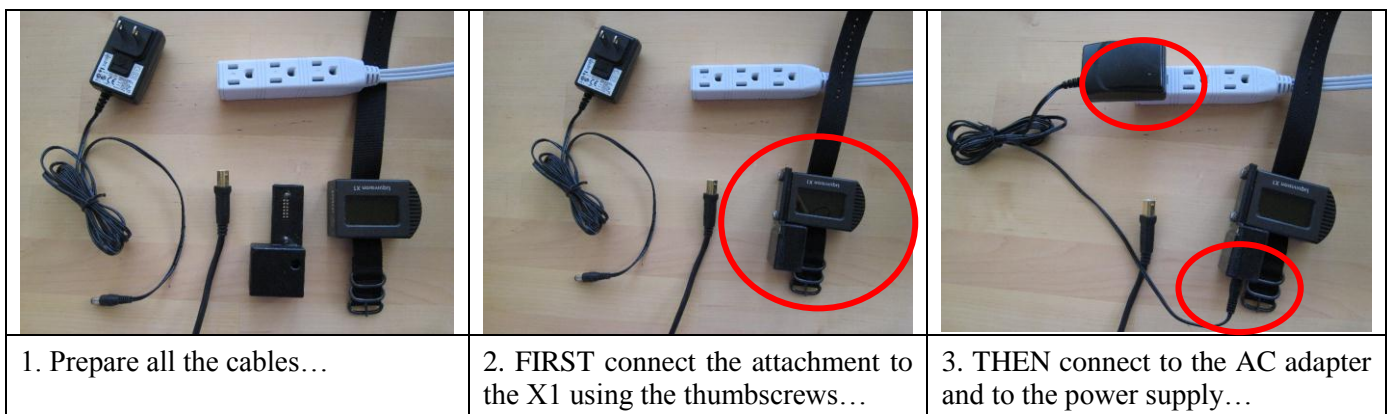
Websites V-Planner Live [VPM B/E]: www.hhssoftware.com/v-planner-live/
MultiDeco-X1 [VPM B/E and Buhlmann GF]: www.hhssoftware.com/multideco-x1/

Step 1: Make sure the USB cable is **NOT CONNECTED to your PC nor the X1 Multifunction Attachment.**

Step 2: Install “Liquivision X1 Multifunction Attachment Driver”

1. Download the drive from our website: http://liquivision.com/x1_manuals.php
2. a) Double click on X1Driver.exe file or right click and select “Open.”
b) You will be prompted to install the Silicon Laboratories USB Xpress driver.
3. Confirm desired installation location. Default location is C:\Program Files\Liquivision\silabs\MCU\USBXpress\. Click “Install.”
4. Driver installation will be confirmed. The X1 USB driver files will now be installed on your computer.

Step 3: Connect your X1 to your computer using the USB cable



(continued on next page)

4. The X1 is now ready to connect to your PC. You can connect the attachment to your PC with the included USB cable as shown:



Step 4: Upload software to X1

Now you can download software to your PC from the internet, and upload it to your X1.

1. Download software from your preferred software vendor

V-Planner Live: www.hhssoftware.com/v-planner-live/

MultiDeco-X1: www.hhssoftware.com/multideco-x1/

Refer to the 3rd party software user manual for specific software upload instructions

Step 5: Disconnect X1 from Multifunction Attachment

1. To disconnect the attachment, follow the above procedure in reverse:
 - a. Disconnect the USB cable
 - b. Then unplug the AC Adapter cable
 - c. Then unscrew the attachment from the X1
2. Never attempt to remove the attachment with the AC Adapter still connected to the wall power source.

► X1 TROUBLESHOOTING GUIDE

If you have problems with the X1, please refer to the table below to solve the problem.

| Symptom | Solution |
|--|--|
| The X1 will not re-charge. The power and attachment are connected but the screen is blank. | First try cleaning the X1 contacts (see Appendix). Double check that the AC adapter is plugged into a reliable power outlet. Reset the X1 (see Appendix). If all of those fail, contact your Dealer or Liquivision. |
| The X1 will not respond to taps. | The X1 attachment may have been disconnected in the wrong sequence, or you may have recharged an X1 with a dead battery. In both cases the solution is to reset the X1 (see Appendix). |
| The X1 did not enter dive mode when I entered the water. | The X1 may not have enough battery power. Try recharging it. The X1 contacts may need cleaning (see Appendix). Also, check your software manual. In some modes the X1 is not configured to turn on based on water contact. |
| I can't download dives or upgrade software. | Try cleaning the X1 contacts (see Appendix). Always make sure the power cable is connected to the X1 attachment, as well as the USB cable. If those still don't solve the problem, contact your Dealer or Liquivision. |
| There are small knobs of gel that appear on the bottom of the X1 when recharging. | This is normal. It is best to recharge the X1 on its side, to allow the gel to expand and contract normally. Do NOT tamper with the gel or cut it off. |
| There are holes or voids on the back side of the X1. | This is normal. |
| The X1 slides around my arm once I reach depth. | Try tightening the strap more before descending. Alternatively you can purchase the X1 bungee mount made by Deep Sea Supply (www.deepseasupply.com). Note: the bungee mount is not CE certified. |
| The X1 doesn't respond well to my taps. Sometimes it detects the tap backwards or doesn't detect the tap at all. | Change the tap sensitivity in your software to the most sensitive setting. Then, tap the X1 harder or more firmly. Tapping the X1 while it is on your wrist works the best. If you want to tap the X1 while holding it in your hand, it takes more practice but it can be done reliably. |
| I recharged my X1 and now it doesn't respond to taps. | If you recharge an X1 with a dead battery, you must always reset the unit for it to respond to taps (see Appendix on how to reset the unit). |
| The X1 doesn't turn on when I apply a wet finger to the contacts. | First double check your software manual. In some modes the X1 will not wake up from wet contacts. If you are sure your software is properly configured, try cleaning the contacts (see Appendix). |

► APPENDIX

1. X1 Reset Sequence



In order to reset the X1:

- Connect the attachment to the X1
- Make sure the USB cable is *not* connected
- Connect power to the X1
- Use a thin pen, and push the reset button that is on the attachment
- If the reset is successful, the title screen of your software should appear
- Disconnect power, then disconnect the attachment

2. Cleaning X1 contacts



In order to clean the X1 contacts:

- Use a sharp stainless steel tool, and scrape the contacts
- Scrape off rust or residue, until the contacts become shiny
- Be careful *not* to scrape or damage the anodized aluminum around the contacts
- After scraping, rinse the contacts with water
- Then, you can further clean the contacts with a cloth and rubbing alcohol
- Dry off the contacts